



Detailed Design

Nova Tech



Welcome

- *Dr. Erik Eddy – CEO TEAMS 101
- *Dr. Meg Fryling
- *Dr. Darren Lim



Agenda

Introduction

Product Overview

Project Progression

Activity Diagram

ER Diagram & Relational Schema

Test Plan

Prototype

What's Next



Introduction

- * Kevin Conner – Team Lead
- * Emma Bostian – Web Master
- * Dave Hall – Database Administrator
- * Sara Pinti – System Administrator
- * Justin Rose – Software Engineer



Agenda

Introduction

Product Overview

Project Progression

Activity Diagram

ER Diagram & Relational Schema

Test Plan

Prototype

What's Next



Product Overview

- * Core application on the TEAMS 101 platform
- * Allows students to complete team evaluations throughout a group project
- * Facilitates productivity and group synergy



Agenda

Introduction

Product Overview

Project Progression

Activity Diagram

ER Diagram & Relational Schema

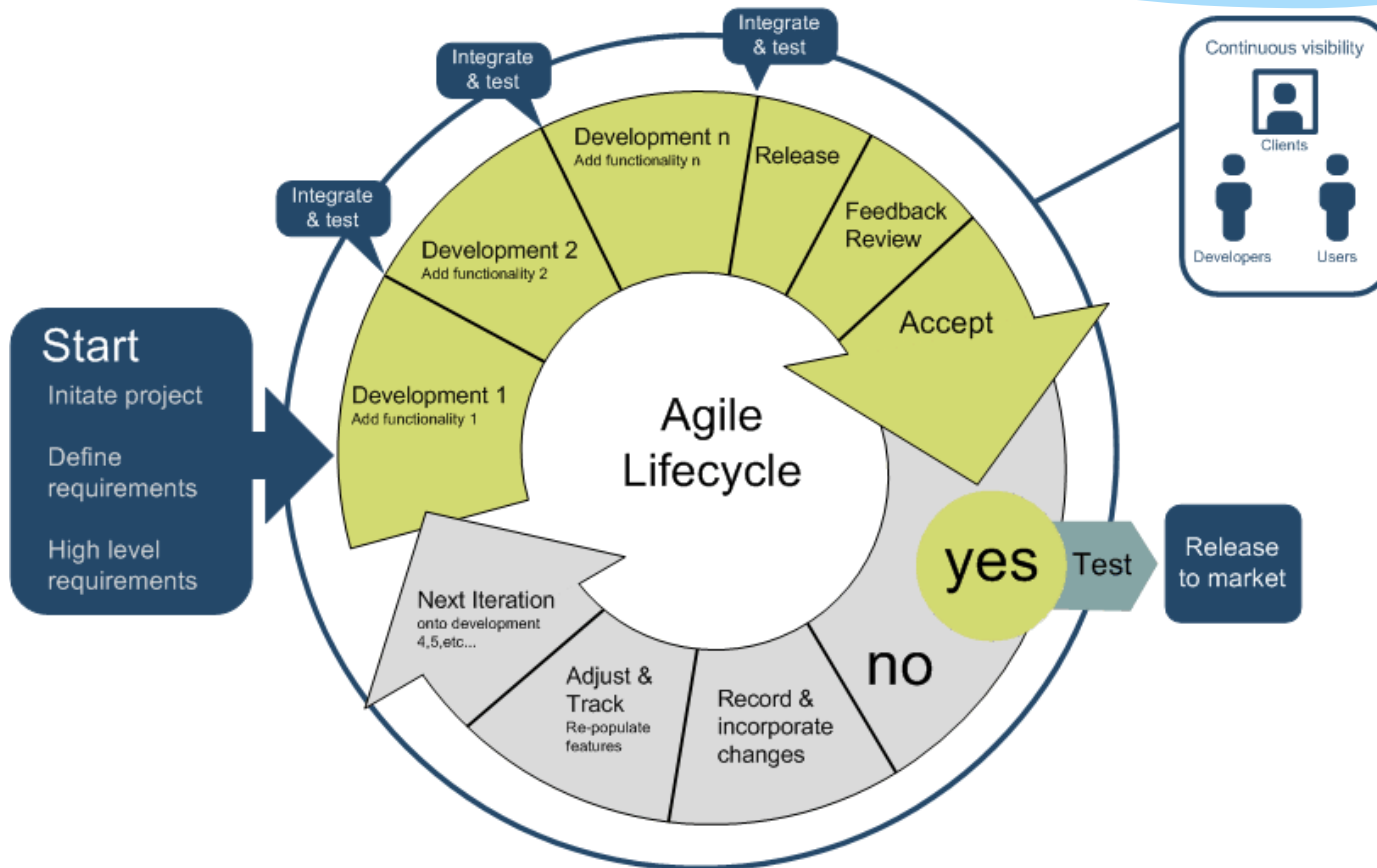
Test Plan

Prototype

What's Next



Project Progression





Agenda

Introduction

Product Overview

Project Progression

Activity Diagram

ER Diagram & Relational Schema

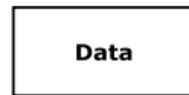
Test Plan

Prototype

What's Next



Activity Diagram



Initial Node – This is the first node in the process. The initial node is the starting point for all movement.

Final Node – The final node is the last node in the process. When the activity flow has reached here, the process is over.

Activity Node – The activity node describes the activity or step to be done to help complete the process when the flow reaches the node.

Decision Node – The decision node is used to branch the activity. A decision node is usually posed in question form, with multiple unique answers. The flow must follow one of the branches after the decision.

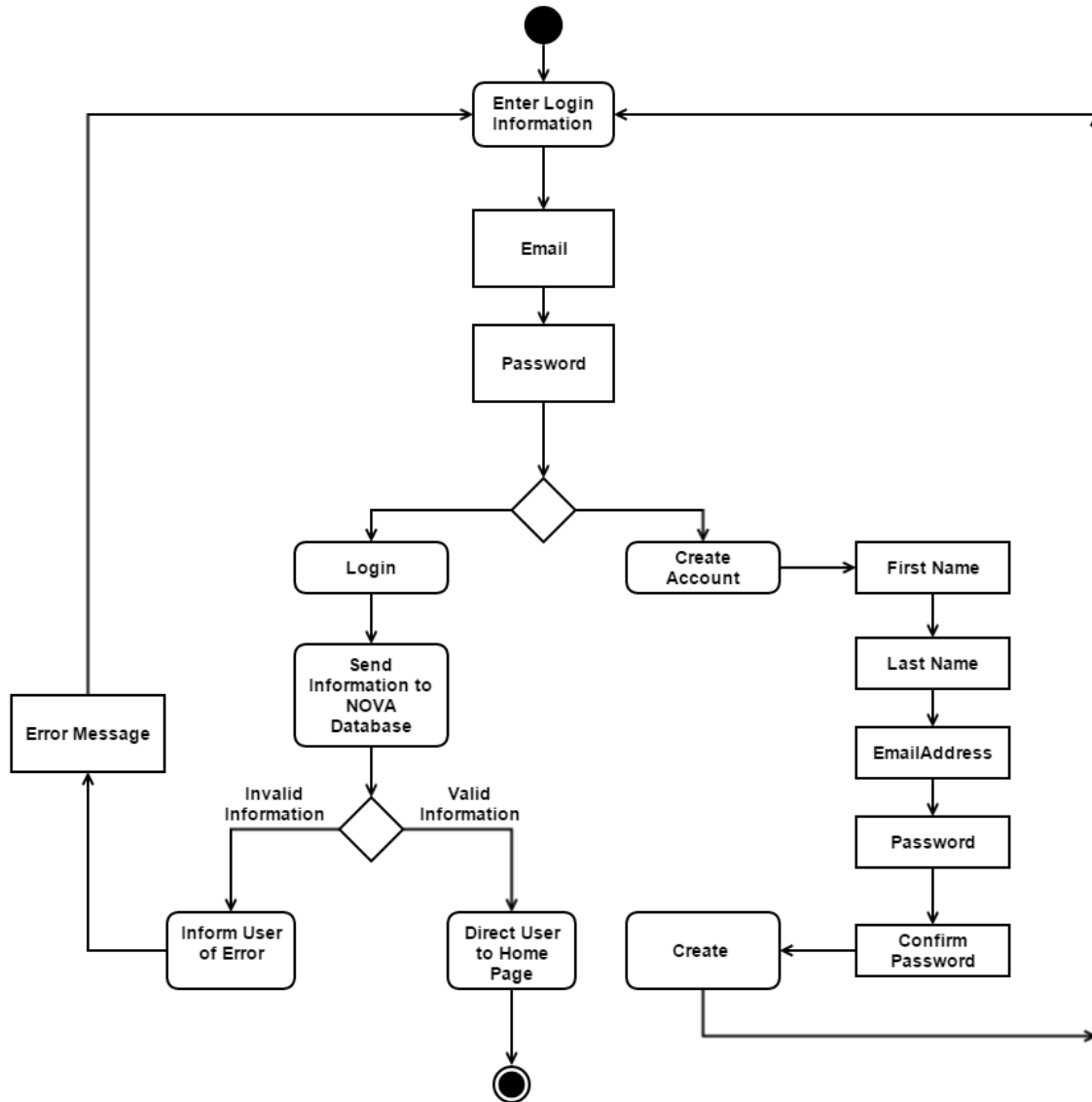
Data Object - Data that is used during the process. The data object can be either input or output.

Split/Join – Can either separate activity flow to run two activities simultaneously or join them back together after simultaneous activities are completed.

Flow – Shows the movement of action from one node to another.



Activity Diagram





Agenda

Introduction

Product Overview

Project Progression

Activity Diagram

ER Diagram & Relational Schema

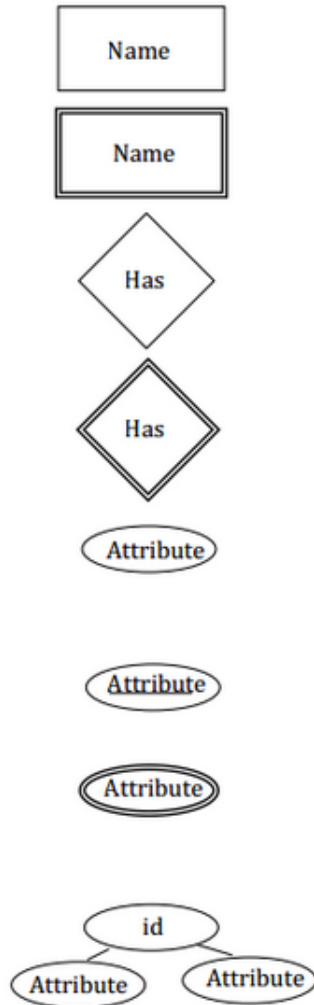
Test Plan

Prototype

What's Next



ER Diagram



Data Entity – Represents an object that can be translated into a table.

Weak Entity Class – An entity that must belong to an original data entity.

Relationship Type – Describes how two entities are related to one another.

Weak Relationship Type – Describes how a data entity is related to a weak entity

Attribute – A defining characteristic of an entity.

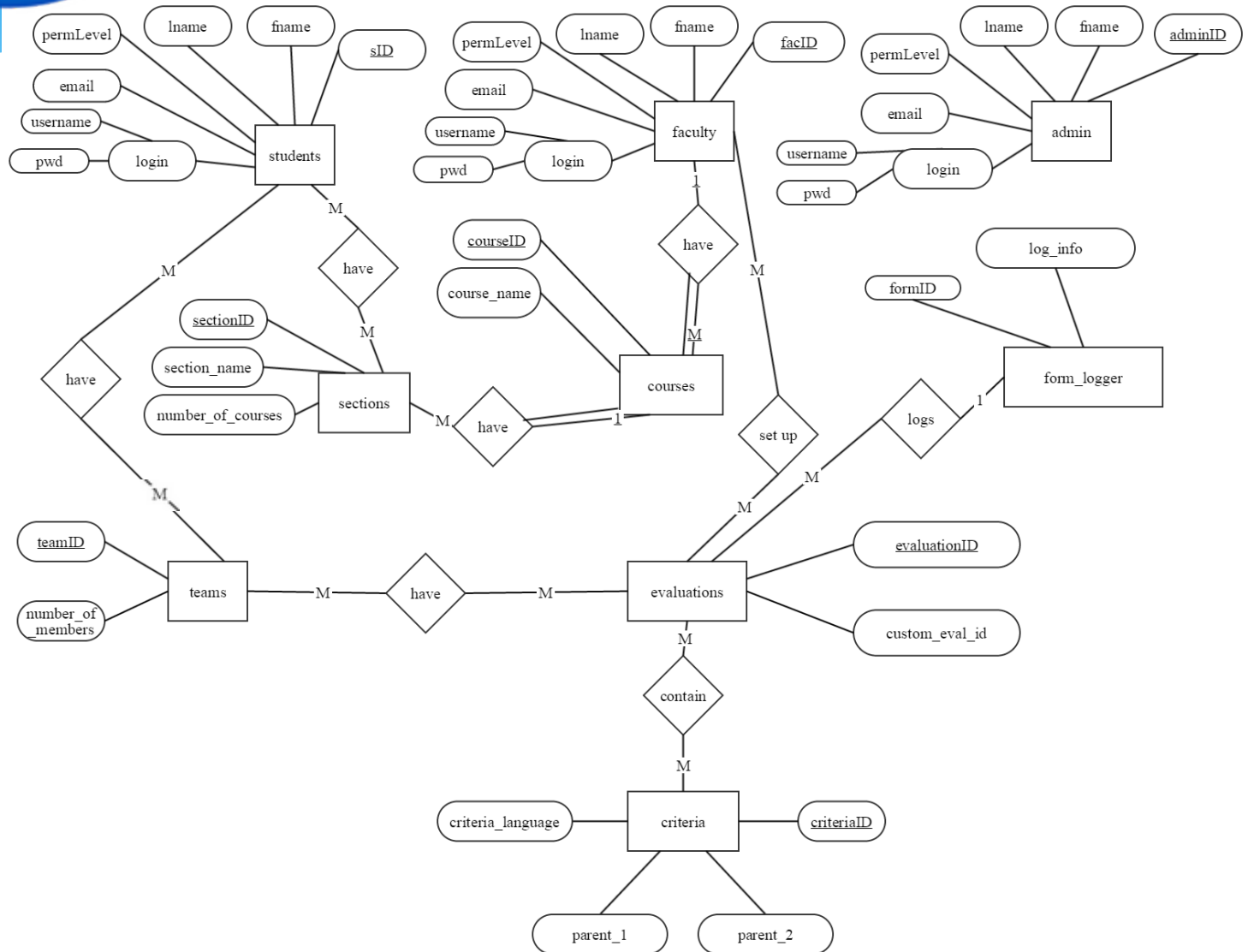
Primary Key – The main defining characteristic of an entity.

Multi-valued Attribute – A characteristic that can have multiple values for each definition of an entity.

Composite Attribute – A characteristic of an entity that can be further defined by additional characteristics.



ER Diagram





Relational Schema

From the ER Diagram, a relational schema can be made. The relational schema is another way to describe a database.

students (sID, login, username, pwd, fname, lname, email, permLevel)

faculty (facID, login, username, pwd, fname, lname, email, permLevel)

admin (adminID, login, username, pwd, fname, lname, email, permLevel)

courses(courseID, course_name, sectionID (fk references sections))

sections (sectionID, section_name, number_of_courses, facID (fk references faculty table), custom_eval_id (fk references evaluations)

**custom_eval_id is used if faculty users want to uniquely generate evaluations and questions on those evaluations for each specific section

teams (teamID, courseID (fk references courses), number_of_members)

evaluations (evaluationID, custom_eval_id)

criteria (criteriaID, criteria_language, parent_1, parent_2)

parent_1 would be the column (based on criteria spreadsheet below)

parent_2 would be the row that it is in

criteria_language is the actual language of the criteria i.e. "is ready for work"

criteria_ID starts at 1 and goes up from there, to more easily access certain criterias

form_logger (formID, log_info)



Agenda

Introduction

Product Overview

Project Progression

Activity Diagram

ER Diagram & Relational Schema

Test Plan

Prototype

What's Next



Test Plan

Create Account on Team Evaluation

Unit 1

Allows user to create an account.

Pass/Fail Status	Test Cases									Test Date
	Test Number	Description	Action to perform test (input)	Steps to be Executed	State Before Test	Expected result	Observed result	Comments	Test ed By	
P	1.001	Null first name Field	Leave username blank.	Fill out remainder of form and press submit.	Empty form	Display "Please enter Username" message.	Displays Invalid Name notification to user		Kevin, Sara	3/9/15
P	1.002	Null last name Field	Leave username blank.	Fill out remainder of form and press submit.	Empty form	Display "Please enter Username" message.	Displays Invalid Name notification to user		Kevin, Sara	3/9/15
P	1.003	One Password Field is Null	Leave either initial password or confirm password blank.	Fill out initial password or confirm password.	Null password fields.	Display "Cannot leave Password blank" message.	password null: invalid password and passwords do not match		Kevin, Sara	3/9/15
P	1.004	Both Password Fields Are Blank	Leave both initial password and confirm password blank.	Press submit	Null password fields.	Display "Cannot leave Password blank" message.	both show notification. differing notifications for		Kevin, Sara	3/9/15
F	1.005	Password Contains Illegal Characters	Enter special character into password field.	Press submit	Empty form	Display "Invalid Password, please try again" message.	Nothing happened. Tested on Chrome and IE	Tried symbols like: < > () . ; % \$ & with no yield.	Kevin, Sara	3/9/15
P	1.006	Username Contains Illegal Characters	Enter special character into username field.	Press submit	Empty form	Display "Invalid Username, please try again" message.	Notification to user that email invalid		Kevin, Sara	3/9/15
F	1.007	Initial Password Is Not At Least 6 Characters Long	Enter a password with less than 6 characters.	Press submit	Empty form	Display "Password must be at least 6 characters long"	Nothing happened. Tested on Chrome and IF	Typed 1 character, then 3, then 5. No result.	Kevin, Sara	3/9/15



Test Plan

F	1.007	Initial Password Is Not At Least 6 Characters Long	Enter a password with less than 6 characters.	Press submit	Empty form	Display "Password must be at least 6 characters long"	Nothing happened. Tested on Chrome and IE	Typed 1 character, then 3, then 5. No result.	Kevin, Sara	3/9/15																
F	1.008	Username is Already Taken	Enter a username that has already been created.	Press submit	Empty form	Display "Username is not available. Please try again." message.	Clears form no error message about username being taken		Kevin, Sara	3/9/15																
P	1.009	Initial Password and Confirmed Password Do Not Match	Enter different passwords into initial and confirm password.	Press submit	Empty form	Display "Passwords do not match" message.	Confirm password does not match notification		Kevin, Sara	3/9/15																
P	1.010	Email Is Not a Siena Email Account	Enter an email that does not end in "@siena.edu"	Press submit	Empty form	Display "Please enter a Siena College email address" message.	Creation of account works for non siena email accounts		Kevin, Sara	3/9/15																
F	1.013	Confirm Email Does Not Match Initial Email	Enter different email addresses into email and confirm email.	Fill out remainder of form and press submit.	Empty form	Display "Email addresses do not match" message.	There exists no "Confirm E-mail" on the Account Creation page		Kevin, Sara	3/9/15																
<table border="0" style="width: 100%; border-collapse: collapse;"> <tr> <td style="width: 5%;">F</td> <td style="width: 15%;">= Unit Summary tests</td> <td style="width: 20%;"></td> <td style="width: 15%;">passing</td> <td style="width: 15%;">7 passed</td> <td style="width: 15%;"></td> <td style="width: 15%;">Date of last test =</td> <td style="width: 10%;">3/9/15</td> </tr> <tr> <td></td> <td>11</td> <td></td> <td>64%</td> <td>4 failed</td> <td></td> <td></td> <td></td> </tr> </table>											F	= Unit Summary tests		passing	7 passed		Date of last test =	3/9/15		11		64%	4 failed			
F	= Unit Summary tests		passing	7 passed		Date of last test =	3/9/15																			
	11		64%	4 failed																						



Test Plan

Login to Team Evaluation										
Unit 2										
Allows user to Login to Team Evaluation										
Test Cases										
Pass/Fail Status	Test Number	Description	Action to perform test (input)	Steps to be Executed	State Before Test	Expected result	Observed result	Comments	Tested By	Test Date
P	1.001	Username Contains Illegal Character	Enter a special character into username.	Enter password and press submit.	Null username and password.	Display "Username is not valid" message.	box rumbles informs user of invalid username	Used kw30\$conn@siena.edu	Kevin, Sara	3/9/15
P	1.002	Password Contains Illegal Character	Enter a special character into password.	Enter username and press submit.	Null username and password.	Display "Password is not valid" message.	box rumbles informs user of invalid username	Used characters like < > () % \$ # ;	Kevin, Sara	3/9/15
P	1.003	Username and Password Do Not Match	Enter a username with an incorrect password.	Press submit.	Null username and password.	Display "Username and password do not match" message.	box rumbles informs user of invalid username or password		Kevin, Sara	3/9/15
P	1.004	Null Username Field	Leave username blank.	Enter password and press submit.	Null username and password.	Display "Enter a username" message.	box rumbles informs user of invalid username		Kevin, Sara	3/9/15
P	1.005	Null Password Field	Leave password blank.	Enter username and press submit.	Null username and password.	Display "Enter a password" message.	box rumbles informs user of invalid username		Kevin, Sara	3/9/15
P	1.006	Null Username and Password Field.	Leave username and password blank.	Press submit.	Null username and password.	Display "Enter a username and password" message.	box rumbles informs user of invalid username or password		Kevin, Sara	3/9/15
P	1.007	Username Does Not Exist	Enter a username that has not been created.	Enter password and press submit.	Null username and password.	Display "Invalid username" message.	box rumbles informs user of invalid username		Kevin, Sara	3/9/15
F	1.008	Link to Password Reset Form	Click "Reset Password" Button	Click "Reset Password" Button	Null username and password.	Redirect to "Reset Password" page.	Fails to reach requested URL	Has not been developed in	Justin	3/2/15
P	1.009	Correct Username and Password.	Enter valid username and password.	Press submit.	Null username and password.	No error message. Proceed to home page.	Redirect to Teammate Evaluation Page		Kevin, Sara	3/9/15
F	= Unit Summary		89% passing		8 passed		Date of last test =		3/9/15	
	9 tests				1 failed					



Test Plan

<i>Complete Evaluation on Team Evaluation</i>										
Unit 3										
Allows user to complete a course evaluation.										
Test Cases										
Pass/Fail Status	Test Number	Description	Action to perform test (input)	Steps to be Executed	State Before Test	Expected result	Observed result	Comments	Tested By	Test Date
Failed	1.001	Questions Not Answered For All Team Members	Only answer some questions for some team members.	Press Submit.	Blank survey.	Display "You must evaluate all team members" message.	Not ready to be tested.		Justin	3/2/15
Failed	1.002	All Team Members Evaluated, But Some Behaviors Left Blank.	Evaluate all team members, but leave some behaviors blank.	Press Submit.	Blank survey.	Display "You must evaluate all behaviors" message.	Not ready to be tested.		Justin	3/2/15
Failed	1.003	Leave Entire Survey Blank.	Leave survey blank.	Press Submit.	Blank survey.	Display "You must evaluate all behaviors" message.	Not ready to be tested.		Justin	
Failed	1.004	All Behaviors Evaluated For All Team Members	Evaluate all team members and all behaviors.	Press Submit.	Blank survey.	No error message, display confirmation.	Not ready to be tested.		Justin	3/2/15
F	= Unit Summary		0% passing		0 passed		Date of last test =		3/2/15	
	4	tests				0 failed				



Agenda

Introduction

Product Overview

Project Progression

Activity Diagram

ER Diagram & Relational Schema

Test Plan

Prototype

What's Next

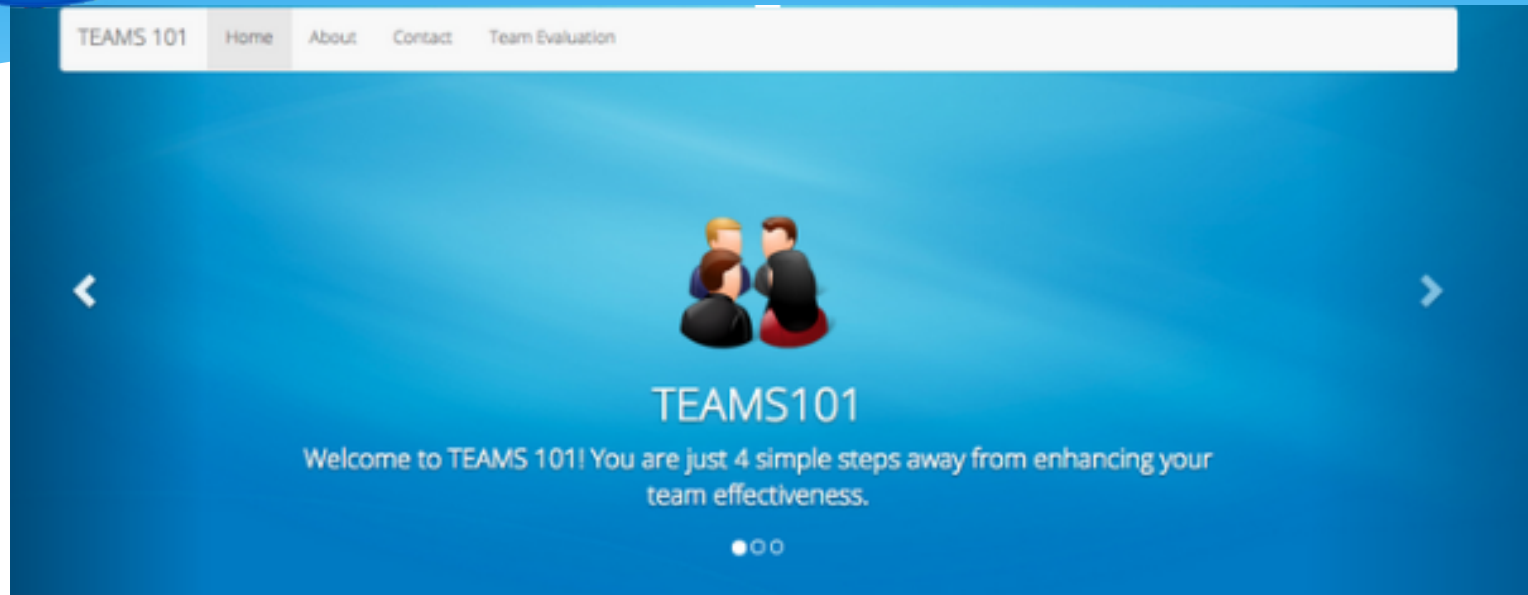


Prototype

- *Content: HTML, PHP
- *Database: MySQL/phpMyAdmin
- *Bootstrap
- *Website



Prototype



Before the project

Before the project begins, you first need to learn about teams, clarify required team skills, and set team goals and clarify expectations.

[View details »](#)



During the project

Provide useful feedback to team members.

[View details »](#)



After the project

Debrief as a team and make adjustments.

[View details »](#)



Prototype

[TEAMS 101](#) [Home](#) [About](#) [Contact](#) [Team Evaluation](#)

About TEAMS 101

Our goal is to provide faculty with simple, easy-to-understand guidance on how to get the most out of their team projects. We call this "teams101" for a reason – while there is a tremendous body of research on team effectiveness in the psychology and management literatures, we have sifted through all the research for you and provide you with tools and advice that will have the greatest impact in the least amount of time. These are "the basics" but you will be surprised at the large impact of incorporating simple tools into your classroom experience.

[Home](#)



Prototype

Please sign in

Sign In

[Forgot password?](#) | [Create an account](#)



Prototype

Create Account

First name

Last name

Email

Password

Confirm
Password



Prototype

Team Evaluation

Home	Take Evaluations	My Evaluations	About	Contact	TEAMS 101
----------------------	----------------------------------	--------------------------------	-----------------------	-------------------------	---------------------------

Welcome back!

The TEAMS education and online support system provides education about what it takes to be a good team member based on the most recent research and access to a cutting-edge online support system that helps student teams maintain top performance.

[Get started today](#)



Agenda

Introduction

Product Overview

Project Progression

Activity Diagram

ER Diagram & Relational Schema

Test Plan

Prototype

What's Next



What's Next

- *Team Evaluation Form/Testing
- *Acceptance Testing
- *Updates to Website



Questions?

